

Self Steering Axle Spare Parts Listing

Distributors

For Your Trailer Axle Suspension Needs Call York :

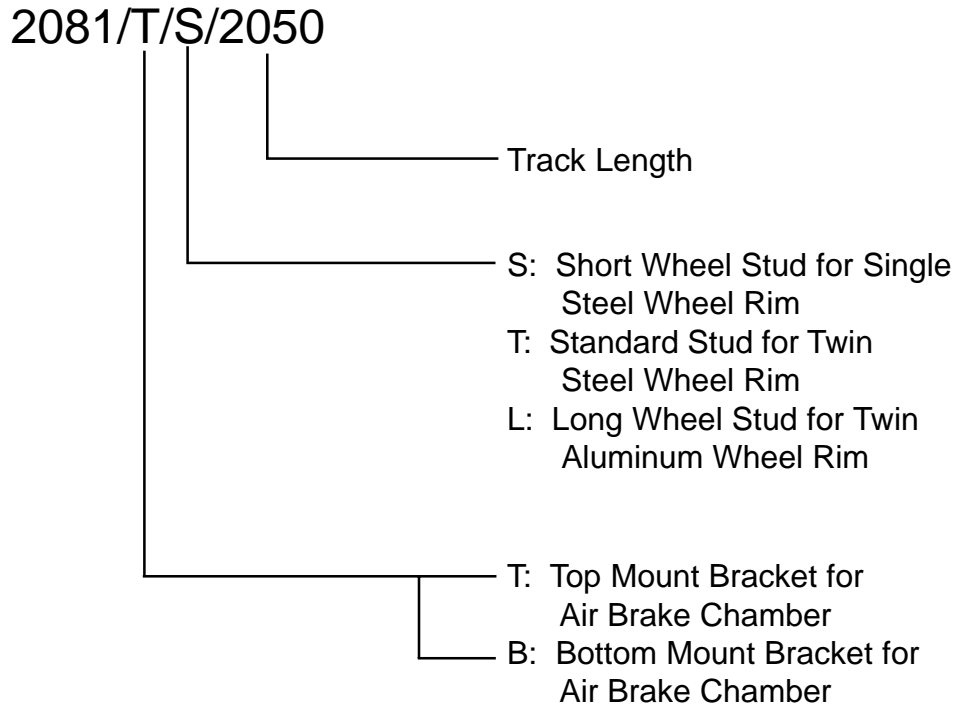
Head Office

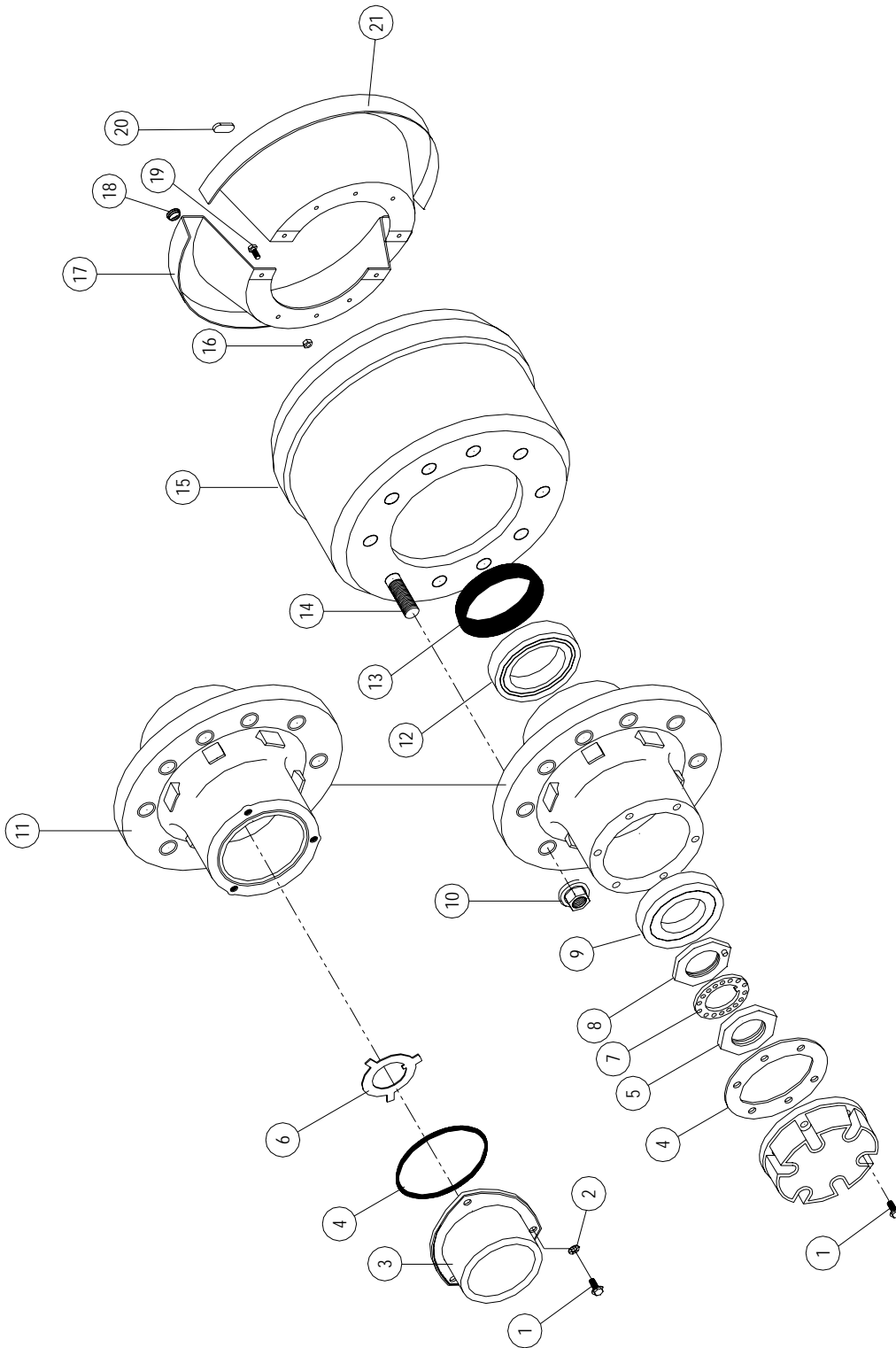
Singapore

York Transport Equipment (Asia) Pte. Ltd.
No. 5 Tuas Avenue 6, Singapore 639295
Email : enquiry@yorktpt.com.sg
Tel : (65) 6861 0577 Fax : (65) 6861 4045

<u>Content</u>	Page
SPARE PARTS LIST (2081 Series)	2 - 5
a) Axle Model Number Example	2
b) Hub and Drum Spare Part Listing	3
c) Brake Spare Part Listing	4
d) Main Beam Assembly Spare Part Listing	5 - 6

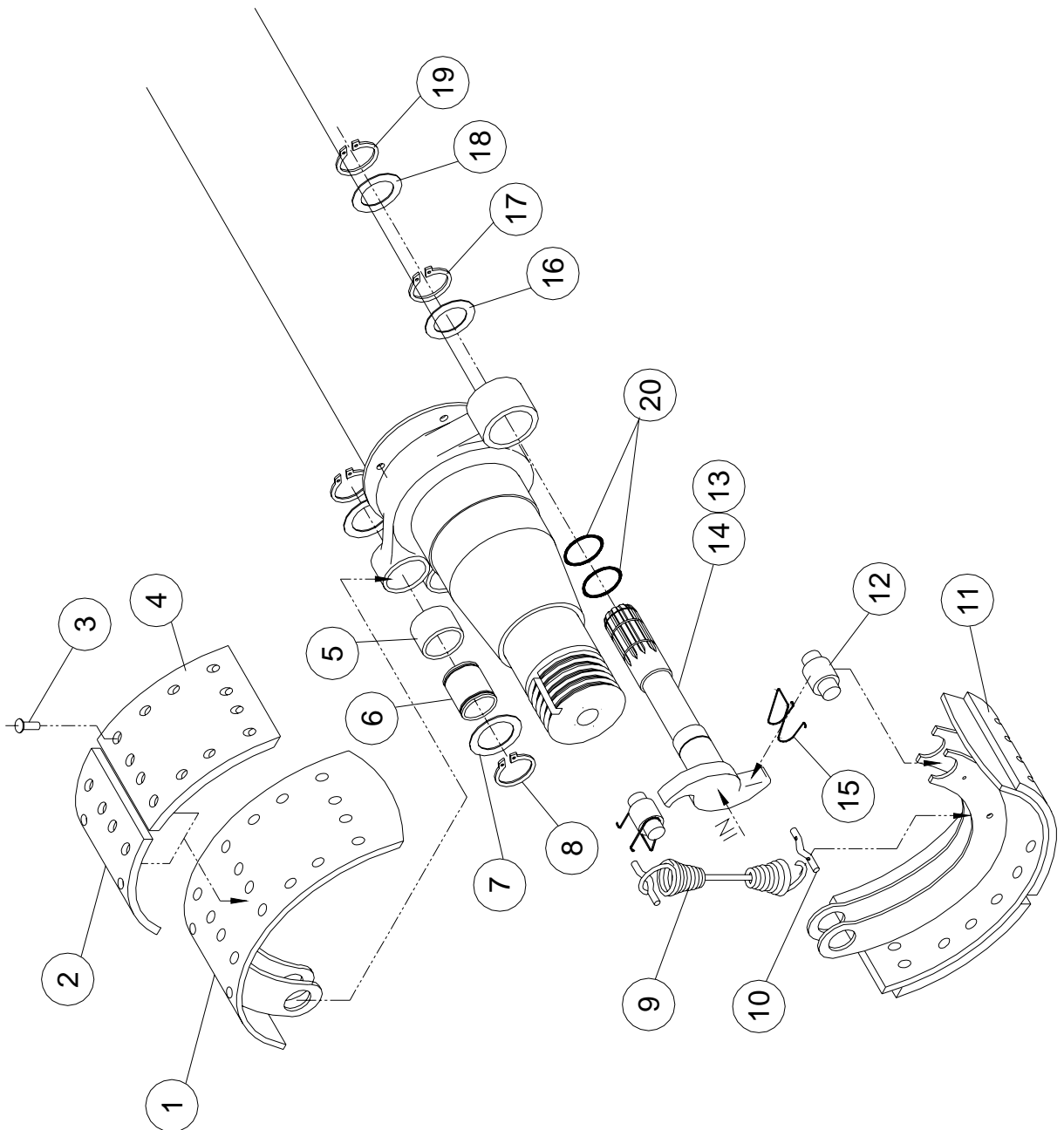
Axle Model Number Example:





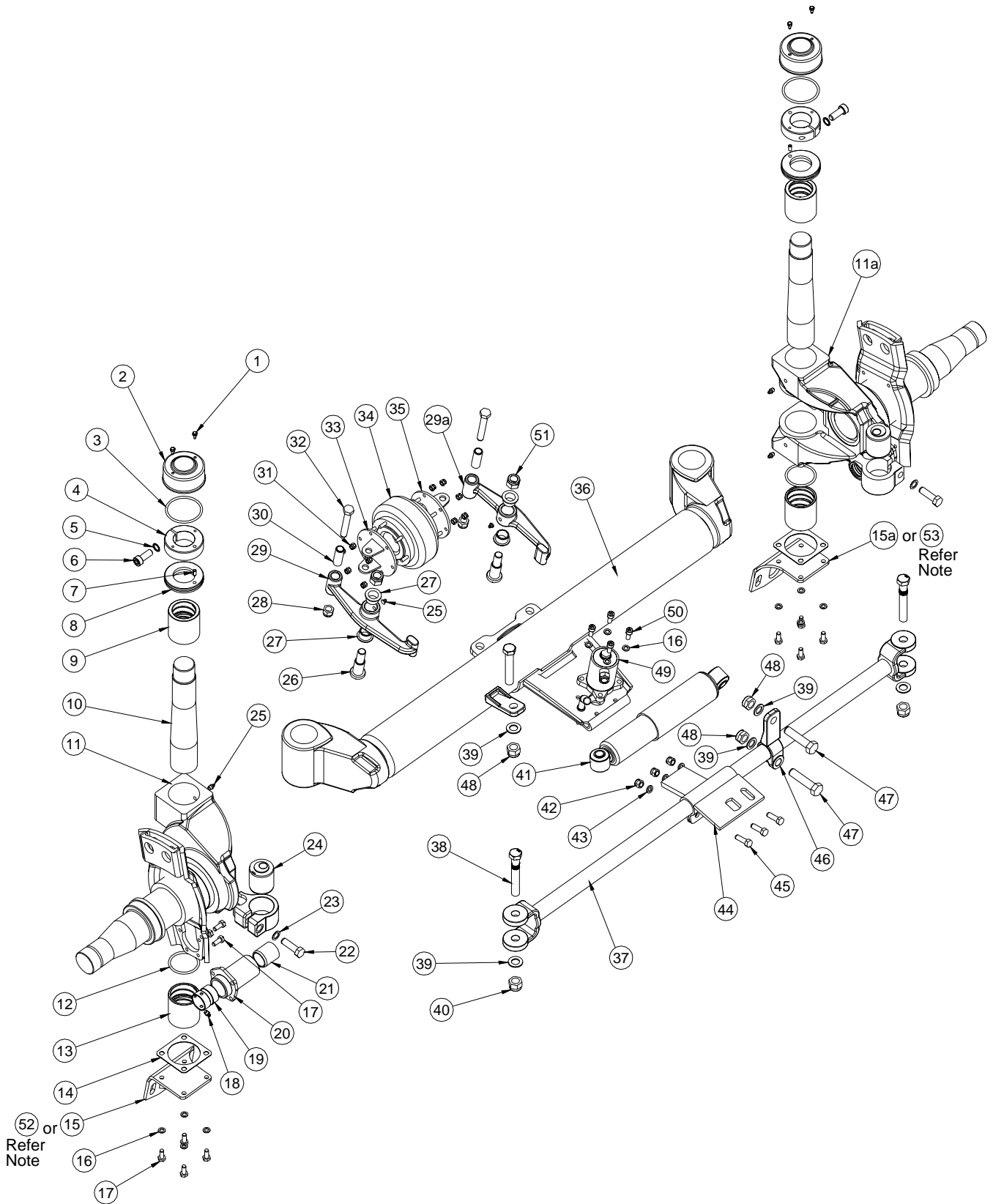
Items	Description	Model		
		2081/2100/AS	2081/B/S/2050 2081/B/T/2050 2081/B/L/2050	2081/T/S/2050 2081/T/T/2050 2081/T/L/2050
1	Hub Cap Bolt	FB08/125/025	←	←
2	Disc Lock Washer	N.A.	DLW08	←
3	Hub Cap - York	501715/YORK	786215/YORK	←
4	Hub Cap Gasket / O-Ring	787719	790224	←
5	Spindle Lock Nut	221200	502462	←
6	Tablock Washer / Spindle	N.A.	790044	←
7	Lock Washer	221201	501123	←
8	Spindle Adjustment Nut	221202	502461	←
9	Outer Bearing	786116	←	←
10	Wheel Nut ISO	502917	←	←
11	Hub	221214	790101	←
12	Inner Bearing	786117	←	←
13	Hub Seal	786114	←	←
14	Wheel Stud ISO (S-Wheel Stud Option)	221203	786113	←
14a	Wheel Stud ISO (T-Wheel Stud Option)	-	786111	←
14b	Wheel Stud ISO (L-Wheel Stud Option)	-	786511	←
15	Brake Drum (420x180)	221204	786115	←
16	Dust Cover Locknut M8	LN08/125	←	←
17	Dust Cover (w/o Slot)	221205	←	←
18	Plug	221208	←	←
19	Mounting Bolt (Dust Cover)	FB08/125/025	←	←
20	Plug Inspection	221207	←	←
21	Dust Cover (with Slot)	221206	←	←

Legend : ← same part



Items	Description	Model		
		2081/2100/AS	2081/B/S/2050 2081/B/T/2050 2081/B/L/2050	2081/T/S/2050 2081/T/T/2050 2081/T/L/2050
1	Brake Shoe (420x180)	502906/01	←	←
2	Anchor Lining	786282/02	←	←
3	Rivet	502245	←	←
4	Cam Lining	786281/02	←	←
5	Anchor Pin Bush	221209	←	←
6	Anchor Pin	501995	←	←
7	Anchor Pin Washer	501996	←	←
8	Circlip (Anchor Pin)	758525	←	←
9	Brake Return Spring	786289	←	←
10	Pin-Return Spring	500372	←	←
11	Lined Shoe Assy	SB502064/02	←	←
12	Cam Roller	500356/01	←	←
13	Camshaft (RH)	221212	←	←
14	Camshaft (LH)	221213	←	←
15	Roller Retainer	500373	←	←
16	Spacer Washer (Camshaft)	500358	←	←
17	Circlip (Camshaft - Inner)	500374	←	←
18	Washer (Slack Adjuster)	221210	←	←
19	Circlip (Camshaft - Outer)	221211	←	←
20	O-Ring (Camshaft)	221262	←	←

Legend : ← same part



Note: Items 52 and 53 are for top mount brackets, which are not shown.

Items	Description	Model		
		2081/2100/AS	2081/B/S/2050 2081/B/T/2050 2081/B/L/2050	2081/T/S/2050 2081/T/T/2050 2081/T/L/2050
1	Screw Top Cap	HB08/125/016	←	←
2	Top Cap / Pivot Pin	221215	←	←
3	Upper Ring / Pivot Pin	221216	←	←
4	Clamping Nut / Pivot Pin	221217	←	←
5	Spring Washer / Pivot Pin	221218	←	←
6	Clamping Screw / Pivot Pin	CB10/150/040	←	←
7	Flexible Pin / Pivot Pin	221219	←	←
8	Washer / Pivot Pin	221220	←	←
9	Top Bush / Pivot Pin	221221	←	←
10	Pivot Pin	221222	←	←
11	Left Stub Axle	221223	221253	221260
11a	Right Stub Axle	221224	221254	221261
12	Lower Ring / Pivot Pin	221225	←	←
13	Bottom Bush / Pivot Pin	221226	←	←
14	Gasket	221227	←	←
15	Bottom AC Bracket/Plate (LH)	221228	←	221259
15a	Bottom AC Bracket/Plate (RH)	221229	←	221259
16	Washer	221230	←	←
17	Screw M10x25	HB10/150/025	←	←
18	Grease Nipple, Camshaft	221231	←	←
19	Outer Camshaft Bush	221232	←	←
20	Camshaft Holder	221233	←	←
21	Inner Camshaft Bush	221234	←	←
22	Screw M16	HB16/150/055	←	←
23	Spring Washer	SW16	←	←
24	Eccentric Rubber Bush	221235	←	←
25	Grease Nipple M10x1	221236	←	←
26	Anchor Pin / Bellow Arm	221237	←	←
27	Anchor Pin Bush / Bellow Arm	221238	←	←
28	Locknut M16	LN16/150	←	←
29	Air Bellow Arm (LH)	221239/L	←	←
29a	Air Bellow Arm (RH)	221239/R	←	←
30	Bush / Bellow Plate	221240	←	←
31	Locknut M8	LN08/125	←	←
32	Hex Bolt M16	HB16/150/100	←	←
33	Left Disc / Bellow	221241	←	←
34	Air Bellow	221242	←	←
35	Right Disc / Bellow with Pipe	221243	←	←
36	Axle Beam	221244/1400	221244/1350	←
37	Track Rod Assy (Refer below kit)	SB221245/1400	SB221245/1350	←
38	Knurled Screw M20	221246	←	←
39	Washer / Track Rod	221247	←	←
40	Locknut M20	LN20/150	←	←
41	Shock Absorber	221248	←	←
42	Locknut M12	LN12/125	←	←
43	Spring Washer	221249	←	←
44	Lock Plate	221250	←	←
45	Screw M12	HB12/125/040	←	←
46	Shock Absorber Bracket with Fastener	221251	←	←
47	Hex Bolt M20	HB20/150/085	←	←
48	Locknut M20	LN20/150	←	←
49	Locking Cylinder	221252	←	←
50	Screw M10	CB10/150/025	←	←
51	Locknut M20	LN20/150	←	←
52	Top AC Bracket/Plate (LH)	N.A.	N.A.	221257
53	Top AC Bracket/Plate (RH)	N.A.	N.A.	221258

Sub Assembly Kit

Items	Description	Kit Number
1	King pin assy (2 per axle, include item 1-10, 12-14)	SB221290
2	Air bellow assy (1 per axle, include item 25b-35 & 51)	SB221291
3	Track rod assy L=1400 (1 per axle, include item 24, 37-40, 42-48)	SB221245/1400
4	Track rod assy L=1350 (1 per axle, include item 24, 37-40, 42-48)	SB221245/1350

Legend : ← same part